

SIMPLE

UIAA EN 15151-2: 2012 type 1

Caving descender.
Descendeur de spéléologie

WARNING / ATTENTION

Activities involving the use of this equipment are inherently dangerous. You are responsible for your own actions and decisions.

Before using this equipment, you must:
- Read and understand all instructions for use.
- Get specific training in its proper use.
- Become acquainted with its capabilities and limitations.
- Understand and accept the risks involved.

FAILURE TO HEED ANY OF THESE WARNINGS MAY RESULT IN SEVERE INJURY OR DEATH.

Les activités impliquant l'utilisation de cet équipement sont par nature dangereuses. Vous êtes responsable de vos actes, de vos décisions et de votre sécurité.

Avant d'utiliser cet équipement, vous devez :
- Lire et comprendre toutes les instructions d'utilisation.
- Vous former spécifiquement à l'utilisation de cet équipement.
- Vous familiariser avec votre équipement, apprendre à connaître ses performances et ses limites.
- Comprendre et accepter les risques induits.

LE NON-RESPECT D'UN SEUL DE CES AVERTISSEMENTS PEUT ÊTRE LA CAUSE DE BLESSURES GRAVES OU MORTELLES.

PETZL.COM



Latest version
Dernière version



Other languages
Autres langues



Technical tips
Conseils techniques



PPE checking
Fiche de contrôle EPI

Warning symbols
Panneaux d'alertes

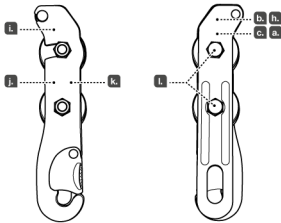


PETZL
FR-38520 Croles
Cidex 105A
PETZL.COM
ISO 9001
© 2024 Petzl
Distribution



Sustaining our Community
Au service de la Communauté
FONDATION-PETZL.ORG

Traceability and markings
Traçabilité et marquage



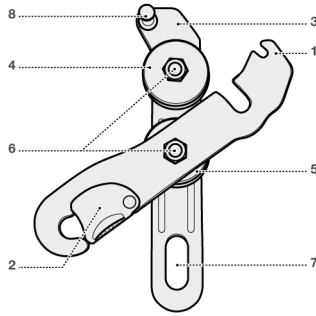
Serial number / Numéro de série

YY M 0000000 000

d
e
f
g

1. Field of application (text part) Champ d'application (partie texte)

2. Nomenclature

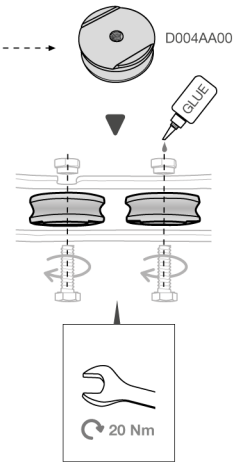
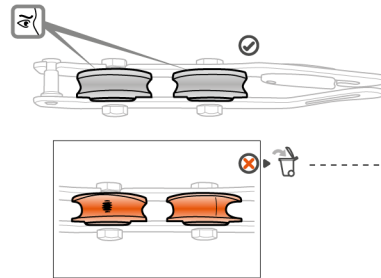


3. Inspection, points to verify Contrôle, points à vérifier

PPE checking
Vérification EPI
PETZL.COM

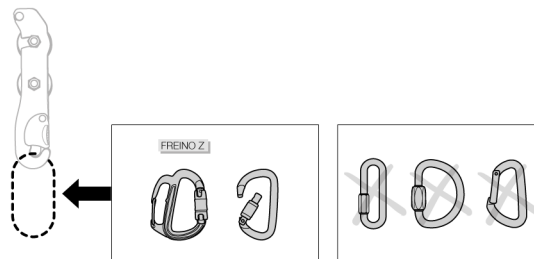


Spare parts / Pièces détachées



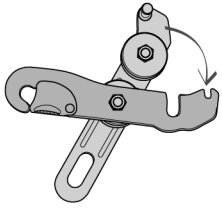
4. Compatibility Compatibilité

EN 1891 8,5 ≤ ∅ ≤ 11 mm

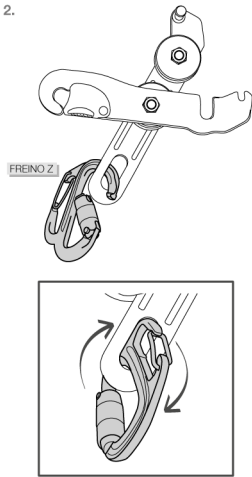


5. Installation

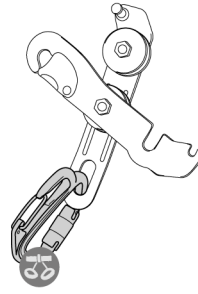
1.



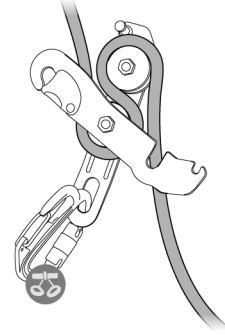
2.



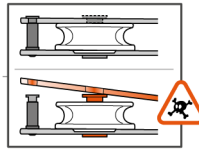
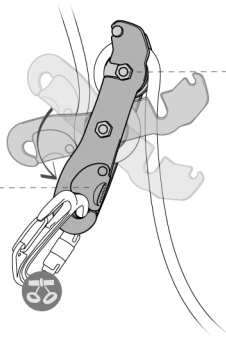
3.



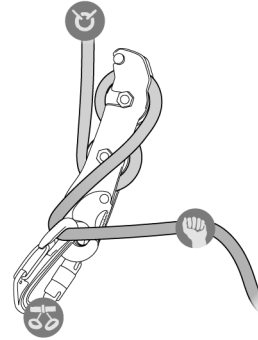
4.



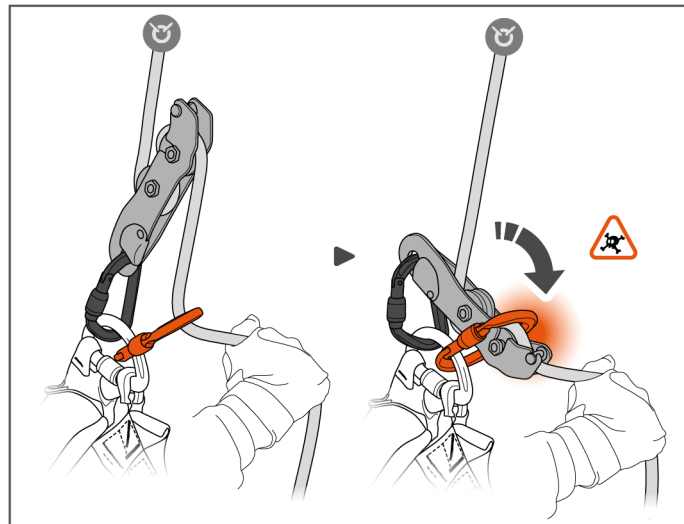
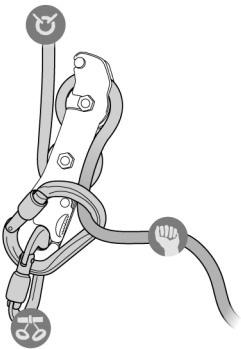
5.



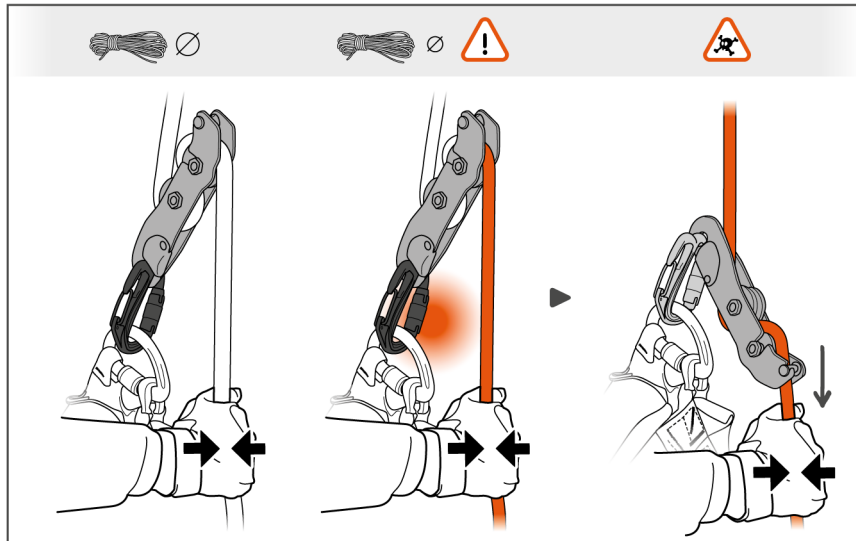
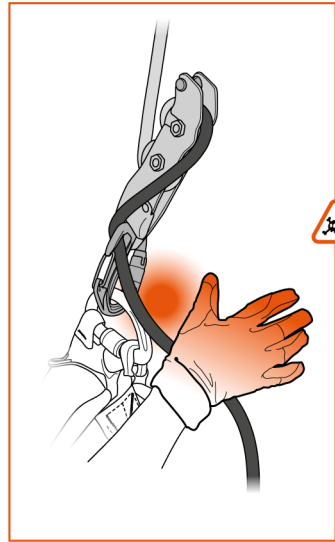
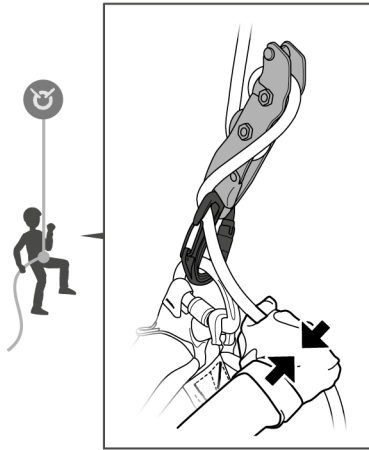
6.



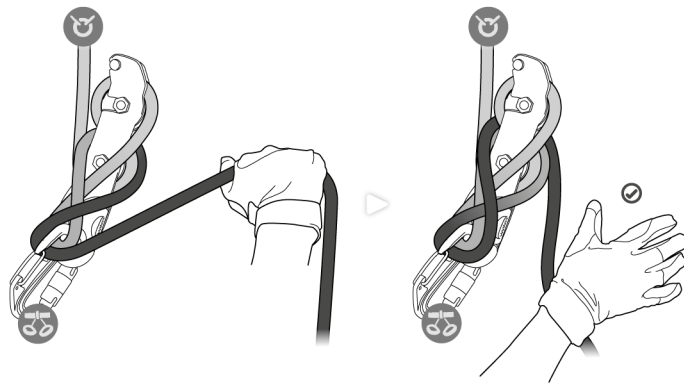
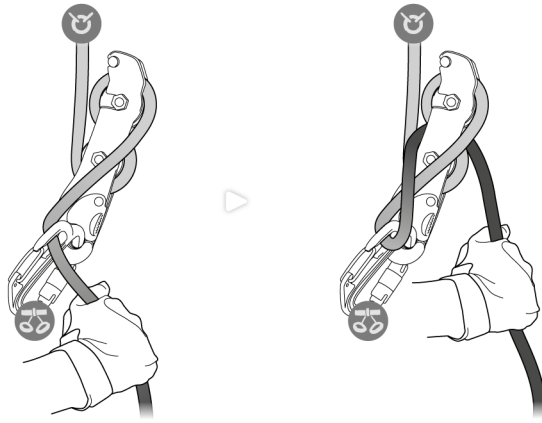
With braking carabiner
Avec mousqueton
de freinage



6. Descent
Descente



7. Stopping with hands free
Arrêt mains libres



8. Additional information
Informations complémentaires

A. Lifetime / Durée de vie
 unlimited
 illimitée

B. Acceptable T°
 T° tolérées
 + 80°C / + 176°F
 - 40°C / - 40°F

C. Precautions for use / Précautions d'usage

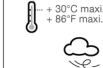


D. Cleaning / Nettoyage



+ 30°C maxi.
 + 86°F maxi.

E. Drying / Séchage



+ 30°C maxi.
 + 86°F maxi.

F. Storage - Transport
 Stockage - transport



G. Maintenance
 Entretien



H. Modifications - Repairs
 Modifications - Réparations



I. FAQ - Contact
 Questions - Contact



→ Petzl

→ petzl.com

